



A
SAFE NEIGHBORHOOD
STUDY

Acknowledgments

TBA Studio thanks Tony Little, President; Roosevelt Wright, Jr., Chairman; Otis Jones; Preston Hopkins; Karl Dhaliwal; Minister Verbon Muhammad; Jeanette Modicure; James Jackson; Maire Brown; Anna Reed; Anthony Glover; all of the committee members, and everyone else for assisting TBA Studio in preparing this design packet. We also want to thank the SEDD Safe Neighborhood Committee for selecting TBA Studio to design this master plan for applicable districts. This breathes new life into an existing neighborhood; it also provides new facilities which will enhance the community beyond

Where We Are Today

The current state of the neighborhood presents several challenges that hinder its potential for growth and prosperity. First, the open ditches exacerbates the issue of flooding, posing a significant risk to residents and their properties. Additionally, the visibility of above-ground utilities detracts from the aesthetic appeal of the area, impacting the overall ambiance and desirability of the neighborhood.

Furthermore, the amount of renters rather than homeowners contributes to a lack of stability and a diminished sense of community ownership and pride. The presence of vacant lots not only diminishes property values in the surrounding neighborhoods but also serves as breeding grounds for weeds, pests, mosquitoes, blight, crime, and requires costly maintenance efforts. Last, the limited proximity of the blocks to highly traveled roads creates a disadvantage in terms of convenience and accessibility to public transportation, further hindering the neighborhood's potential for growth and development.



Where We Are Going

Addressing these challenges through strategic planning and revitalization efforts will be crucial in transforming the neighborhood into a thriving and sustainable community that fosters pride, stability, and inclusivity for all its residents.

This master plan will include exterior improvements such as in-filling ditches, pedestrian level lighting, enhanced landscaping, underground utilities, and new sidewalks. Other community improvements will include a healthcare clinic, a neighborhood playground, community police housing, and solar panels installments.

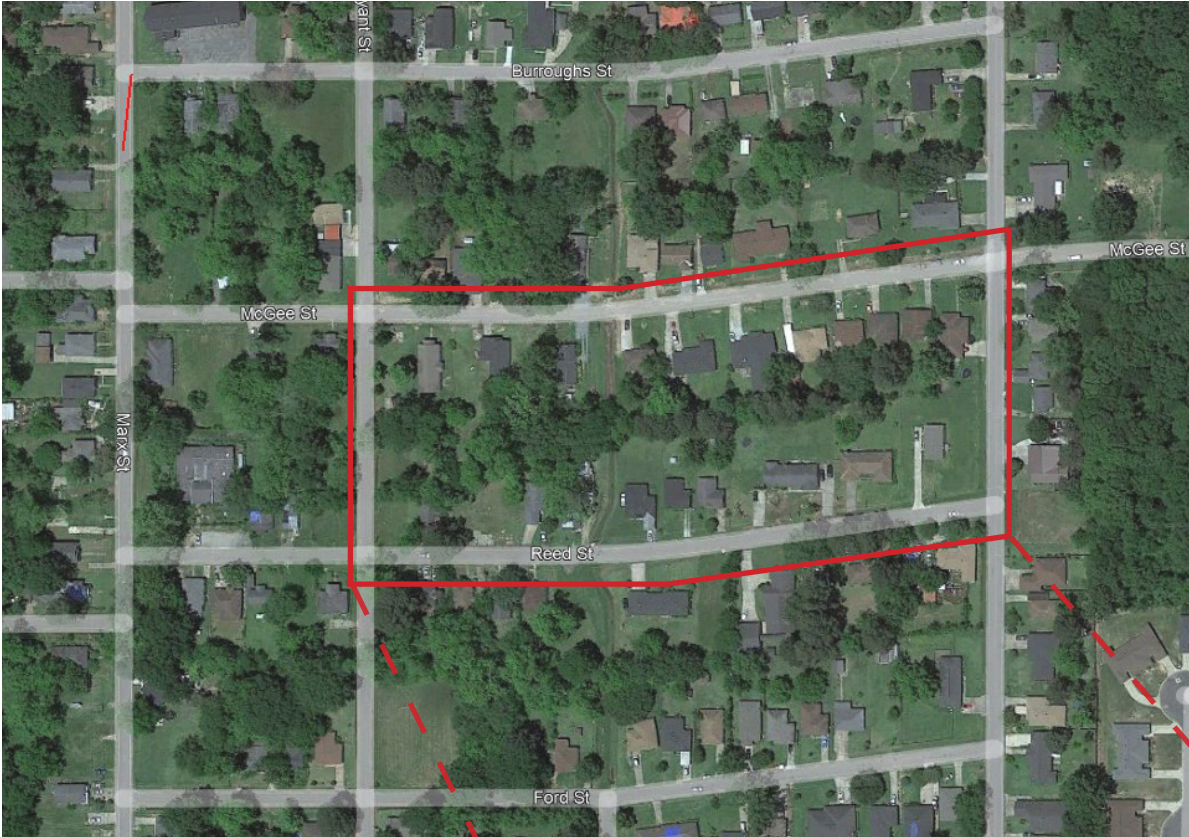
Each aspect will contribute to forming a cohesive environment that supports community advancement, public safety, and residential wellness.



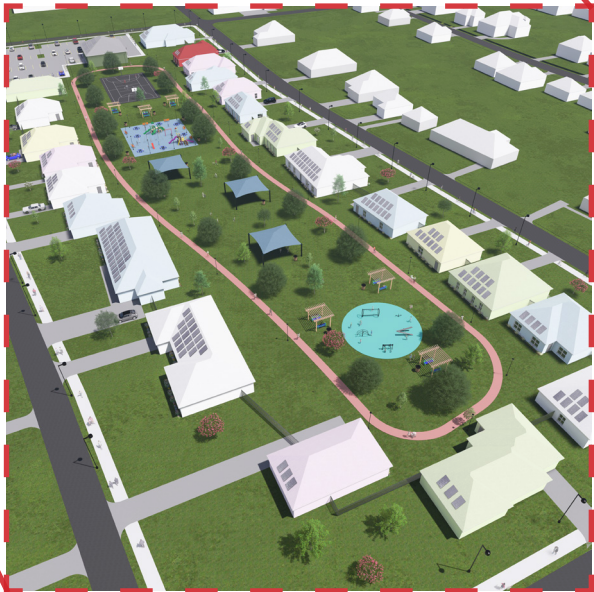
TBA

Safe Neighborhood Location - District 5

Today



The Transformation



Neighborhood Overview

Pedestrian Lighting

Parking Lot

Secured Fencing

Health Clinic

Enhanced Landscaping

Neighborhood Playground

Community Police Housing Unit

In-filled Ditches

Underground Utilities

Solar Panels

New Sidewalks



TBA

Refurbished Home Example



Before



After

8 Main Design Solutions

1 No Open Ditches

Living in a community with no open ditches offers numerous benefits that significantly contribute to the overall well-being and appeal of the neighborhood. The absence of open ditches enhances safety by eliminating potential hazards and reducing the risk of accidents or injuries. Without exposed drainage channels, residents, especially children and pedestrians, can navigate the community with greater ease and confidence.

The aesthetic appeal of the neighborhood is markedly improved without open ditches, fostering a cleaner and more visually pleasing environment. The absence of open ditches allows for more efficient landscaping, creating green spaces that enhance the overall beauty of the community. This aesthetic improvement not only contributes to a sense of pride among residents but also positively impacts property values. Overall, a community without open ditches promotes a safer, more attractive, and enjoyable living environment for all its inhabitants.



TBA

2 Underground Utilities

The benefits of underground utilities include improved aesthetics, increased reliability, and enhanced safety, making it a positive investment for any community.

Underground utilities improve the overall appearance of the area by eliminating overhead wires and utility poles, creating a cleaner and more aesthetically pleasing environment. This not only enhances the neighborhood's visual appeal but also contributes to a sense of community pride.

Additionally, underground utilities are less susceptible to weather-related damage, reducing the likelihood of power outages or service disruptions during storms. This increased reliability and enhances the overall quality of life for residents.

Furthermore, underground utilities minimize safety hazards, as there are no exposed wires or poles that could pose risks to pedestrians and vehicles.



TBA

3 Solar Panels

Solar panels contribute to a cleaner environment by harnessing renewable energy from the sun, reducing dependence on fossil fuels and lowering overall carbon emissions. This environmentally friendly approach aligns with global efforts to combat climate change.

Homeowners with solar panels often experience a decrease in energy bills as they generate their own electricity, leading to long-term cost savings. This financial advantage not only benefits individual households but can also positively impact the entire community by potentially reducing the strain on the local power grid.

The installation of solar panels boosts property values, making homes more attractive to environmentally conscious buyers and contributing to a sustainable and forward-thinking image for the neighborhood. In essence, embracing solar energy in a residential setting not only supports environmental conservation but also offers economic benefits for both individual homeowners and the community as a whole.



4 Police Housing Unit

The physical presence of law enforcement personnel within the community fosters a sense of security and reassurance among residents, acting as a deterrent to criminal activities. The housing unit creates a direct and approachable link between the police force and the community, fostering positive relationships and improving overall trust.

Additionally, the integration of surveillance cameras enhances the effectiveness of crime prevention and investigation efforts. These cameras provide real-time monitoring, deterring potential criminal behavior, and serving as valuable tools for law enforcement in solving crimes. The increased visibility and accessibility of the police contribute to a proactive and responsive approach to community safety.

Altogether, a community police housing unit with surveillance cameras not only bolsters security measures but also strengthens the collaboration between law enforcement and residents, creating a safer and more cohesive living environment.



5 Playground, Park, and Mini Health Clinic

The playground provides a safe and engaging space for children to play and socialize, contributing to their physical and social development. The park, as a larger green space, offers residents a place for relaxation, exercise, and community gatherings, fostering a sense of unity and well-being. The presence of a mini health clinic brings accessible healthcare services closer to residents, promoting preventive care and timely medical attention. This not only enhances the overall health of the community but also reduces the burden on larger healthcare facilities. Together, these amenities create a holistic environment that supports physical fitness, social interaction, and community health, making the neighborhood a more vibrant and desirable place to live.



6 Coordinated Landscaping

Well-designed landscaping enhances the aesthetic beauty of the neighborhood, creating an inviting and pleasant environment for residents and visitors alike. Beautiful green spaces, gardens, and well-maintained lawns contribute to a positive and uplifting atmosphere. Landscaping can improve property values as visually appealing surroundings are often associated with higher real estate values.

Additionally, strategically placed trees and greenery provide shade, reduce noise, and improve air quality, creating a healthier living environment. Landscaped areas also encourage outdoor activities, fostering a sense of community and social interaction among neighbors.

Overall, landscaping in a neighborhood not only enhances the visual appeal but also contributes to residents' physical and mental well-being, making it a valuable investment for community development.



7 Extensive Lighting

It enhances overall safety by reducing the likelihood of accidents and deterring criminal activities. Well-lit streets and public spaces create a sense of security, making it safer for pedestrians and drivers alike.

Extensive lighting promotes community engagement by providing a welcoming and inviting atmosphere for outdoor activities, evening walks, and social gatherings. Increased visibility can also foster a stronger sense of community, as residents feel more comfortable interacting and participating in neighborhood events.

Well-lit neighborhoods often experience reduced crime rates, as brightly illuminated areas are less attractive to potential offenders. Overall, extensive lighting not only enhances safety but also contributes to a vibrant and connected community, making it a key element in neighborhood development.



TBA

8 5G Internet

Improved connectivity can act as a catalyst for economic revitalization by attracting businesses, fostering innovation, and creating employment opportunities. Access to faster and more reliable internet can bridge educational gaps, providing residents with enhanced online learning resources and opportunities for skill development.

In the healthcare sector, 5G can facilitate telemedicine services, improving access to medical care for residents in under-served areas. Additionally, the deployment of 5G infrastructure can enhance public safety measures, supporting quicker and more efficient emergency response systems. Overall, bringing 5G internet to an area facing difficulties can help break down barriers, spur economic growth, and improve overall quality of life for its residents.



TBA



Thank you

TBA Studio extends our sincere gratitude to the SEDD team for allowing us the opportunity to be a part of this project. We are excited about the prospect of working together to bring a new vision to life for the neighborhood. We believe that this revitalization effort will not only enhance the physical landscape but also foster a stronger sense of community. By creating spaces that encourage interaction and engagement, we envision a neighborhood where residents can thrive socially and economically. Thank you for entrusting us with this important task, and we look forward to making a positive impact together.

TBA